

**“T.E. STARZL”**  
**SPRING MEETING SITO 2017**  
**Linee Guida in Trapiantologia**

**Collegio SITO-SIN**

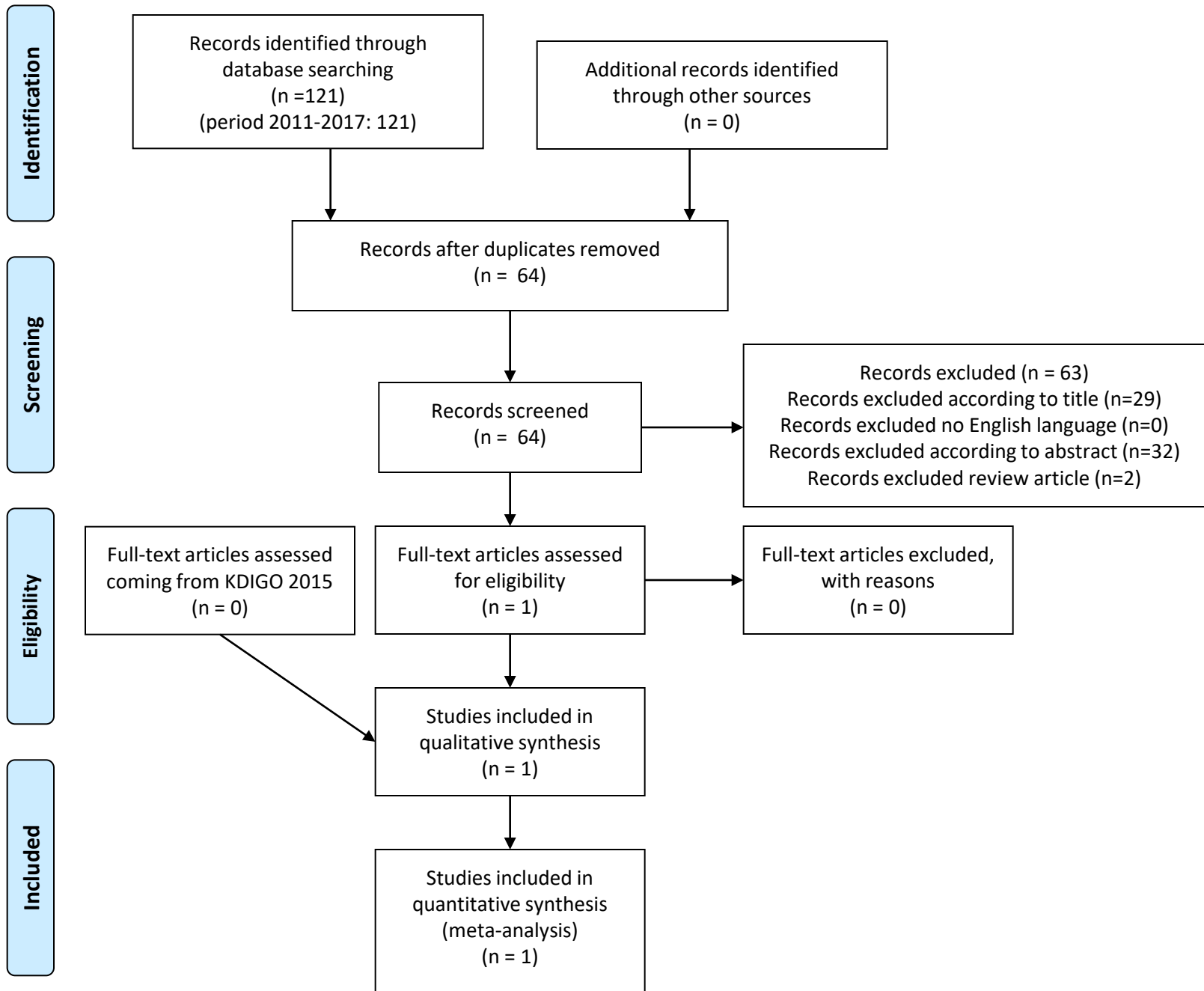
Proposta per le raccomandazioni cliniche sulla  
valutazione e follow-up del donatore vivente di  
trapianto renale

***GRUPPO 3***

Silvestre Cristina (Padova)

Soldini Gabriele (Varese)

# Gravidanza



## **Gestational Hypertension and Preeclampsia in Living Kidney Donors**

Garg AX, Nevis IF, McArthur E, Sontrop JM, Koval JJ, Lam NN, Hildebrand AM, Reese PP, Storsley L, Gill JS, Segev DL, Habbous S, Bugeja A, Knoll GA, Dipchand C, Monroy-Cuadros M, Lentine KL; DONOR Network..

N Engl J Med. 2015 Jan 8;372(2):124-33. doi: 10.1056/NEJMoa1408932

Retrospective cohort study from 1992 to 2009 in Ontario, with follow-up through linked health care databases until March 2013.

- 131 Kidney donors pregnancies were matched in a 1:6 ratio with 788 healthy nondonors pregnancies from the general population.

Donors and nondonors were matched with respect to age, year of cohort entry, residency (urban or rural), income, number of pregnancies before cohort entry, and the time to the first pregnancy after cohort entry.

# Gestational Hypertension and Preeclampsia in Living Kidney Donors

Garg AX et al. N Engl J Med. 2015

The study found that the absolute risk of gestational hypertension or preeclampsia increases from 5 % to 11 % because of nephrectomy.

Outcome	Pregnancies in Donors (N =131)	Pregnancies in Nondonors (N=788) <i>no. of events (%)</i>	Odds Ratio (95% CI)	P Value*
Primary outcome: gestational hypertension or preeclampsia	15 (11)	38 (5)	2.4 (1.2-5.0)	0.01
Secondary outcomes				
Gestational hypertension <sup>†</sup>	7 (5)	17 (2)	2.5 (0.9-6.5)	0.06
Preeclampsia	8 (6)	21 (3)	2.4 (1.0-5.6)	0.05
Cesarean section	41 (31)	224 (28)	1.2 (0.7-2.1)	0.44
Postpartum hemorrhage	≤5 (≤4) <sup>‡</sup>	24 (3)	0.9 (0.3-2.9)	0.91
Preterm birth with gestation of <37 wk	10 (8)	52 (7)	1.2 (0.5-2.5)	0.70
Low birth weight of <2500 g	8 (6)	31 (4)	1.7 (0.7-4.0)	0.21

Maternal and fetal outcomes did not differ significantly between the two groups, and there were no maternal or perinatal deaths.

Most women had uncomplicated pregnancies after kidney donation.

# Gestational Hypertension and Preeclampsia in Living Kidney Donors

Garg AX et al. N Engl J Med. 2015

The increase in risk of Gestational Hypertension or Preeclampsia in donors versus non-donors was significantly higher among those >32 years of age than in younger women.

